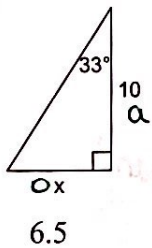


Key

Finding Side Lengths and Angles Review

Find the missing side. Round to the nearest tenth.

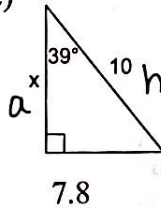
1)



$$\tan 33 = \frac{x}{10}$$

$$x = 6.5$$

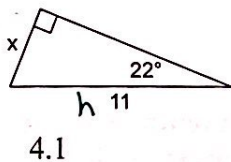
2)



$$\cos 39 = \frac{x}{10}$$

$$x = 7.8$$

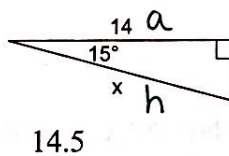
3)



$$\sin 22^\circ = \frac{x}{11}$$

$$x = 4.1$$

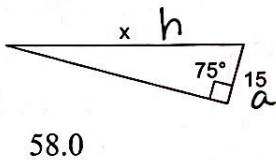
4)



$$\cos 15 = \frac{14}{x}$$

$$x = 14.5$$

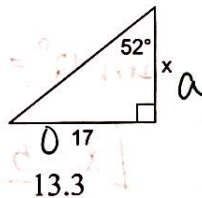
5)



$$\cos 75 = \frac{x}{15}$$

$$x = 58$$

6)

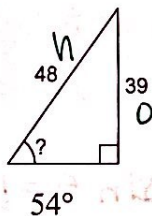


$$\tan 52 = \frac{x}{17}$$

$$x = 13.3$$

Find the measure of the indicated angle to the nearest degree.

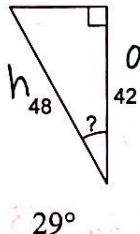
7)



$$\sin x = \frac{39}{48}$$

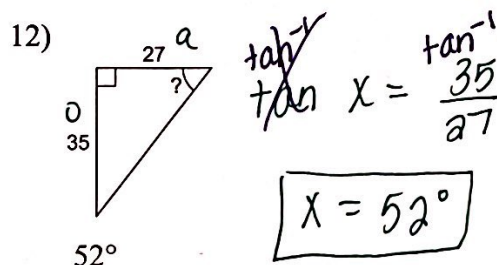
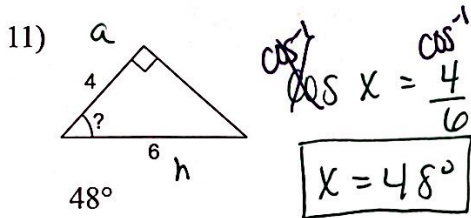
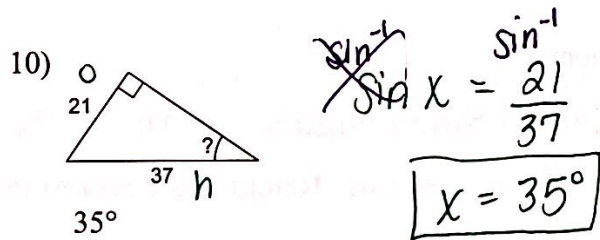
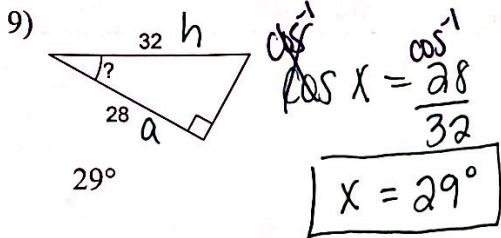
$$x = 54^\circ$$

8)



$$\cos x = \frac{42}{48}$$

$$x = 29^\circ$$



Find the length of the side labeled x . Round intermediate values to the nearest tenth. Use the rounded values to calculate the next value. Round your final answer to the nearest tenth.

